



COUNTERTOP PACKERS

E42-E53-E92

Designed for tightly wrapping piles of laundry, sheets, towels, folded clothes and bulky items (small duvets, pillows).



E42



E53



E92

Uses



Dry cleaner



Laundry



Garment
manufacturing



Hotel trade

Recommended film roll



- Width 480 mm - 25µ perforated LDPE - ref. ARPG10-690050
- Width 600 mm - 30µ perforated LDPE - ref. ARPG10-680095
- Width 900 mm - 25µ perforated LDPE - ref. ARPG10-690052



- ✓ Easy insertion of laundry items or clothes thanks to the feeder.
- ✓ Easy to use, fast and reliable.
- ✓ Cost-effective solution: use of roll instead of plastic bags.
- ✓ Different models depending on requirements in terms of weld length and feeder size.
- ✓ Optional extra feeder for a pre-loaded feeder.



1 year warranty⁽¹⁾

⁽¹⁾Except wear parts



Compatible materials
Bio-sourced or compostable



Compliance with
CE standards

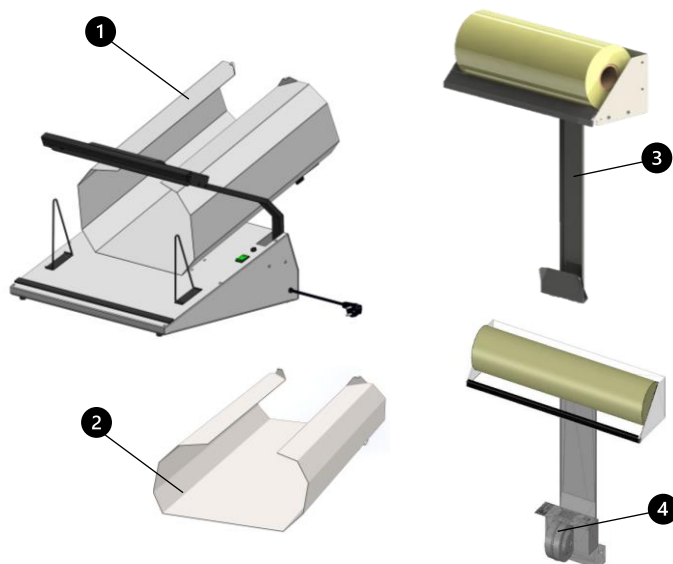
CLOTHING range

TECHNICAL DATA

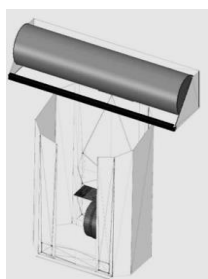
MODELS								
E42	66 x 47 x 42,2 cm	480 mm	G 480	360 x 160 mm	420 mm	15 kg	50 W	230 V - 50/60 Hz
E53	75 x 57,3 x 50 cm	480 mm	G 480	360 x 180 mm	520 mm	20 kg	50 W	230 V - 50/60 Hz
E531	75 x 57,3 x 50 cm	600 mm	G 600	420 x 220 mm	520 mm	22 kg	50 W	230 V - 50/60 Hz
E923	92 x 72 x 74,5 cm	600 mm	G 600	420 x 220 mm	650 mm	33 kg	50 W	230 V - 50/60 Hz
E92	92 x 72 x 74,5 cm	900 mm	G 900	580 x 350 mm	650 mm	35 kg	50 W	230 V - 50/60 Hz

EQUIPMENT

N°	DESCRIPTION	E42	E53	E92
1	Feeder included	✓	✓	✓
2	Additional feeder	option ref. G480	option ref. G480 ref. G600	option ref. G600 ref. G900
3	Wall-mounted feeder loader	option ref. C62		✗
4	Wall-mounted feeder loader with blower	✗	✗	option ref. C92



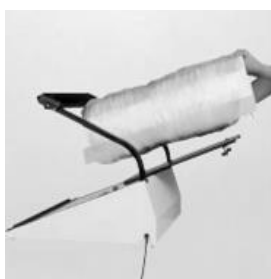
OPERATING PRINCIPLE



Place the feeder on the loader.



Place the film on the feeder, then separate it from the roll.



Place the feeder on the packer, introduce the laundry items in from the top.



Lower the handle to weld and cut the film.



The parcel is now ready. It has to be removed from the front of the packer.

ZOOM ON FEEDERS LOADERS

- ✓ Integrated roll holder to make it easier to fit the film on the feeder.
- ✓ **C92 loader** equipped with an integrated blower (air flow that spreads the film) for an easier installation of film on the feeder.

Need more information?



Contact the sales
department

+33 (0)4 74 00 59 54